

THE HOT ISSUE

AUSTRALIA

KITCHEN & BATHROOM SPECIAL

# elle

APRIL/MAY 2008

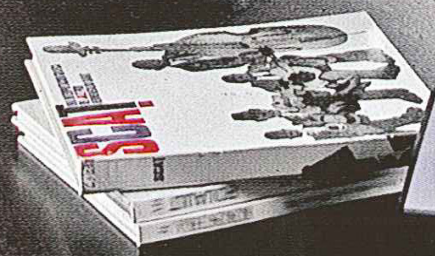
**HOT SHOTS**  
NEW FACES  
OF AUSTRALIAN  
DESIGN

54  
PAGES OF BRILLIANT  
KITCHENS &  
BATHROOMS

**EXCLUSIVE**  
PARIS INSIDER:  
Home trends from  
the Maison & Objet fair

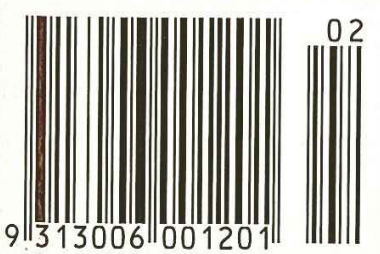
**CREATIVE MINDS**  
Jean Prouvé  
Oscar Niemeyer  
Michael Young

IS **TOKYO** THE  
COOLEST CITY IN  
THE WORLD?

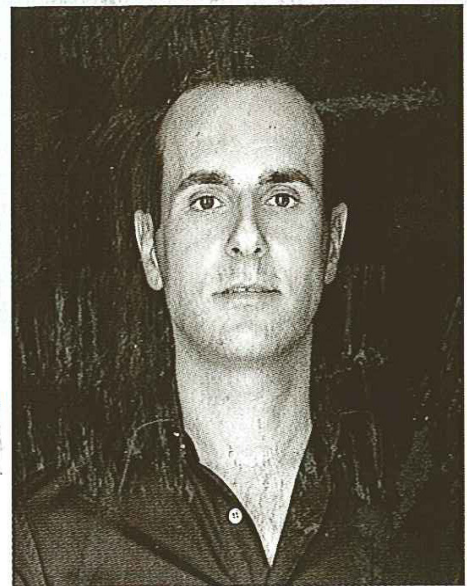
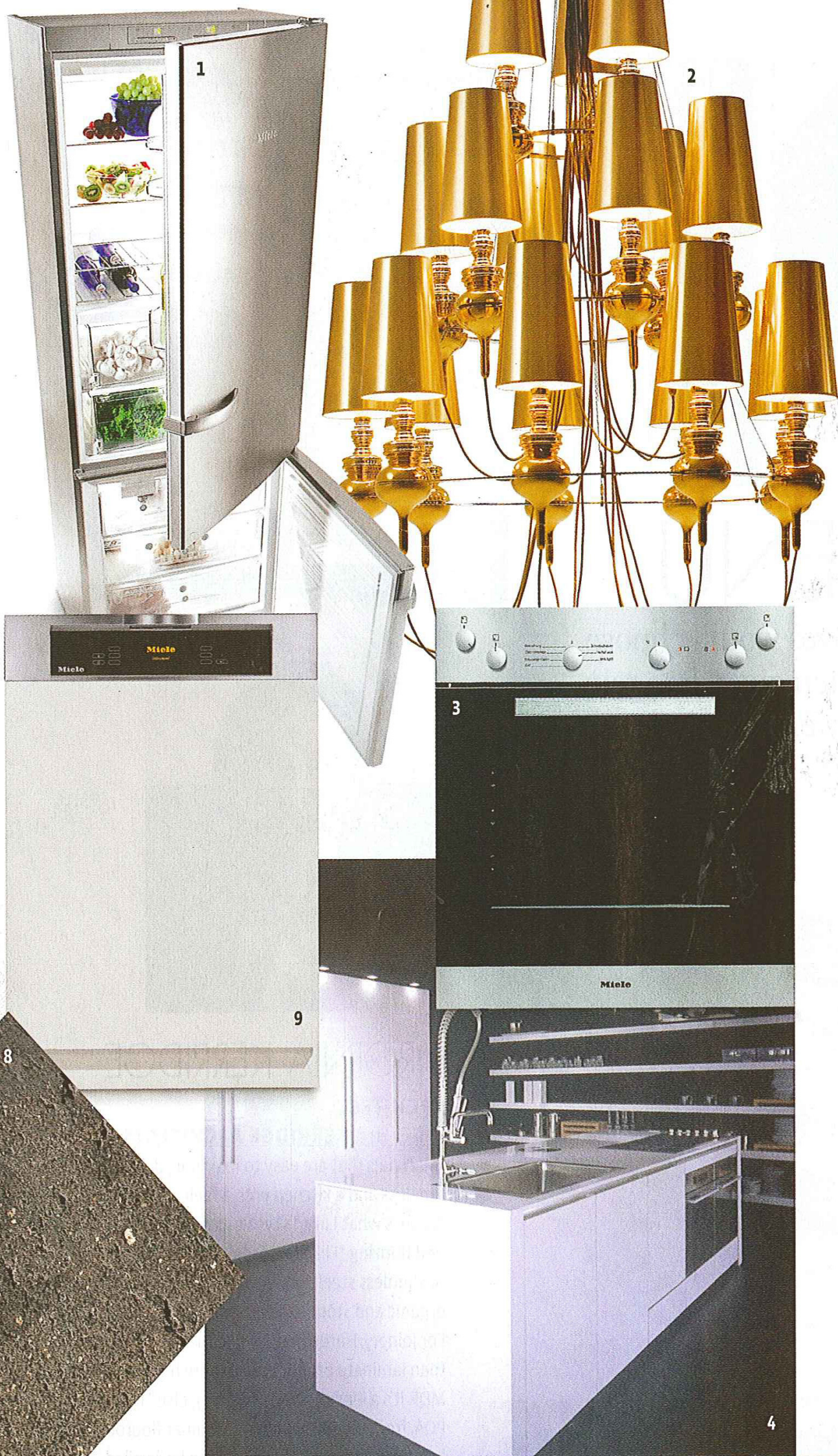


SO **HOT**  
RIGHT NOW

\$8.95 (INCL. GST) PP255003/00004 (NZ \$10.00) acp







## GREG NATALE

### INTERIOR DESIGNER GREG NATALE DESIGN

"I like dark, masculine finishes that are reflective and glossy to add glamour. I've added gold, white and stainless steel into the scheme because I like to play with contrasts to achieve a visual balance." **1 & 9 Appliances** "These should be integrated. Miele products feel beautiful." Miele 'KFN 8997 SE' fridge, \$6399, and 'G 2832 SCI' dishwasher, \$3299, both from Domayne. **2 Chandelier** "A contemporary adaptation of a chandelier cuts out the froufrou, and it's unexpected in a kitchen." Metalarte 'Josephine Queen Chandelier' by Jaime Hayón, POA, from LPA. **3 Oven** "An oven should be a blend of timeless design and good quality." Miele 'H4220 B' wall oven, \$1499, from Domayne. **4 Sink** "I love this sink, which is square and quite unusual." Boffi 'Case System' kitchen, POA, from Space. **5 Joinery** "I like dark timber grains for joinery." Colours by Boffi in Ecwood Ebony, POA, from Space. **6 Benchtop** "Corian has a textural softness that stone and steel don't have, and it can be moulded on-site for seamless sinks and benchtops." Satinised Corian in White, POA, from DuPont Corian. **7 Splashback** "Glass is extremely practical, and black ties in well with the joinery I've chosen." Black colour-backed glass, POA, from Grosvenor Glass. **8 Flooring** "This is luxurious flooring material that is hard-wearing and has the contemporary look of concrete, but is more refined and elegant. It's on the floors of all the Dolce & Gabbana stores worldwide." Warm Grey Basaltina Stone, POA, from On-Site Design. [www.gregnatale.com](http://www.gregnatale.com).

"I PREFER CLEAN LINES AND A TOM FORD APPROACH TO FINISHES: DARK, MASCULINE AND GLAMOROUS."



**Q&A**

**DESIGNER GREG NATALE**

**What was the brief from the client?** To restore and improve their original '40s bathroom, keeping all original components, even though the rest of the house was going through a major renovation.

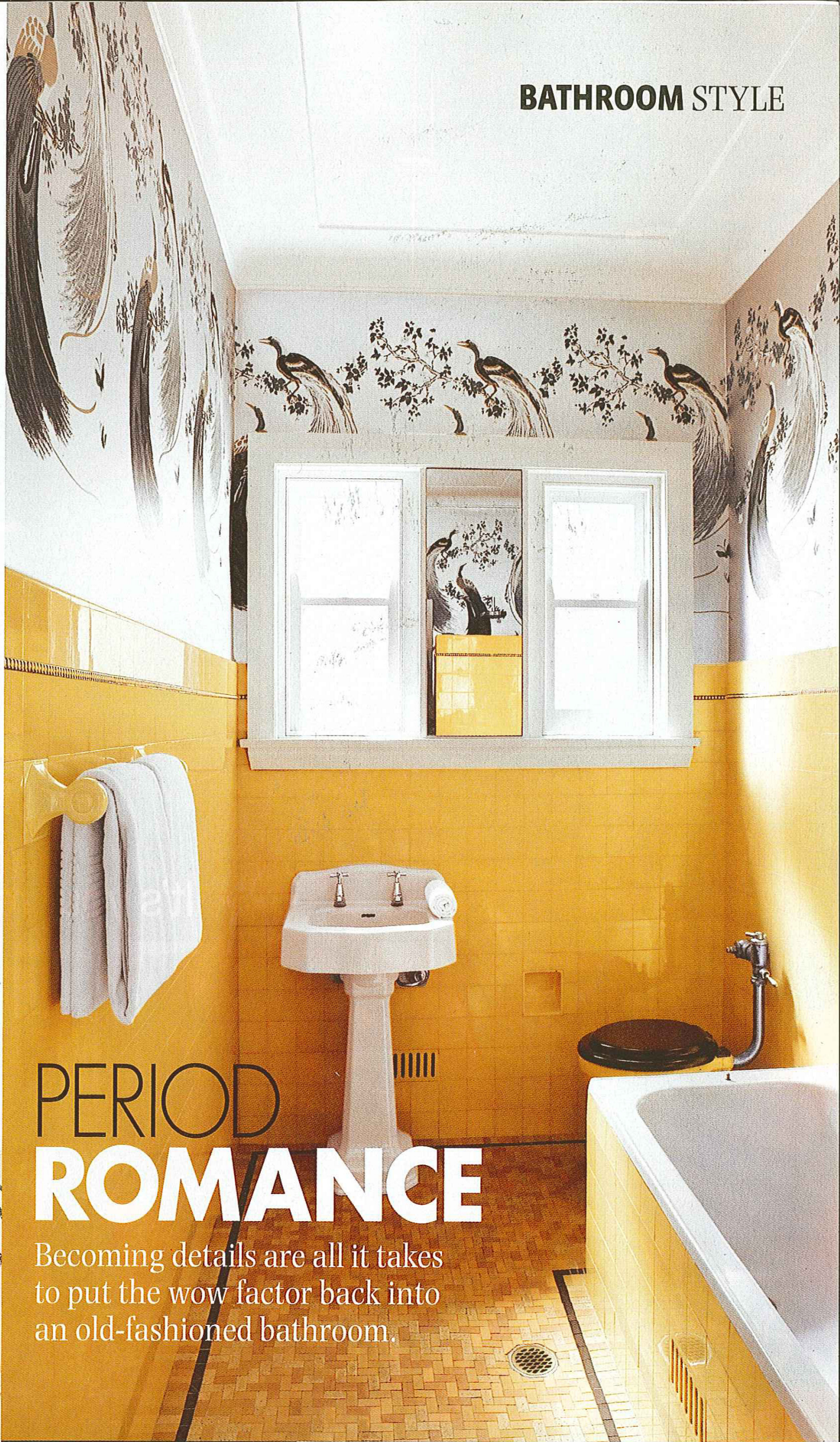
**Did the design have to take into account any challenges, such as a problem site, a tight budget, a small or awkward space?** Luckily, the existing colour scheme was in keeping, and suited to, our design solutions for the rest of the renovation. Our challenge was simply a matter of bringing light to, and finding a 'wow' solution for, a dark, old bathroom.

**What design solutions were devised to solve the challenges outlined above?** The frosted glass in the windows was replaced (the previous glass was orange and made the bathroom look dark and dingy) and a new shiny black toilet seat was sourced from Cass Brothers to replace the existing one. Exotic Birds wallpaper by Florence Broadhurst from Signature Prints was specifically chosen to complement the existing colours in the bathroom and provide the much-needed wow factor.

**What was the thinking behind the choice of finishes in this bathroom?** As mentioned, we felt the Florence Broadhurst wallpaper would perfectly pick up the colours of the existing canary-yellow tiles. We also thought its whimsical feel would bring the bathroom out of its ordinary state.

**What do you like best about your work on this bathroom?** It would have been a real shame to have pulled it out – so, the fact that we could save it.

**Describe a key component in saving this bathroom.** We used a hydrochloric acid washing process to clean and brighten the original tiles.



PERIOD  
**ROMANCE**

Becoming details are all it takes to put the wow factor back into an old-fashioned bathroom.



PHOTOGRAPHS ANSON SMART. WORDS ANDREA MILLAR

**FACT FILE**

**DESIGNER** GREG NATALE (GREG NATALE DESIGN). **BUILDER** CIOLINO CONSTRUCTIONS. **SHOWER SCREEN & TOILET SEAT** CASS BROTHERS. **BASIN TAPWARE** DORF FROM CASS BROTHERS. **WALLPAPER** FLORENCE BROADHURST 'EXOTIC BIRDS' FROM SIGNATURE PRINTS. For stockists, see Address Book.

**KEY DESIGN FEATURES** The unusual challenge of preserving the layout and fixtures of a period bathroom forced Sydney designer Greg Natale to look for unusual solutions.

