

# real homes

PUT YOUR FEET UP AND TAKE A PEEK AT THESE CLEVER HOMES

## 92 Lacklustre to luxe

This Sydney home is given an ultra-glamorous makeover with a stylish black and white colour scheme

## 100 Retro revamp

A sympathetic renovation breathes new life into a rundown 1960s beach cottage

## 108 Raising the roof

Clever space-saving ideas and hits of colour turn a tiny house into a surprisingly spacious home

## 116 Easy elegance

A couple who love to entertain transform their old terrace into a sophisticated gem, perfect for socialising

### Young fashionista

Chloe Iliffe stands on a reupholstered Platner chair holding a Fornasetti cushion in the sitting room of her family's newly renovated Victorian terrace in Sydney's Woollahra. *Flip the page to see more of this gorgeous home.* →

### Open space

An easy way for homeowner Jessica Iliffe – pictured with her children Chloe, Paris and Joshua – to make more space in the kitchen was to remove a benchtop and create a galley-style room. A black and white scheme adds instant glamour to the room, along with decorative mouldings on the pantry doors.



## MODERN GLAMOUR

Bored with beige on beige, a Sydney couple inject some **old-world glamour** into their Victorian terrace in Woollahra

writer natalie walton | photography mike newling | styling sarah ellison

**Wow factor**

Mainly cosmetic changes were made to the sitting room, including replacing the existing light with a luxurious, custom-made chandelier. Jessica bought the table and Platner chairs on eBay and had the chairs re-covered in Maharam "Kvadrat" black velvet. The rug, a Greg Natale creation for Designer Rugs, ties the look together. →



### Clever styling (below)

Jessica wanted to replace the floor tiles in the kitchen, but instead opted for a colour scheme that draws attention away from the floor.



### Classic combo (above)

The smart black and white scheme is found throughout the period home. The stairs were recarpeted with sisal from International Floorcoverings and finished with chrome stair rods.

**who lives here?** | Jessica and Trent Iliffe with their children Paris, 8, Chloe, 5, and Joshua, 2  
[Modernfurniture resolutions.com](http://Modernfurniture resolutions.com)

**1 Black & white** "Trent has always wanted a black and white house and has toyed with versions of this over the years," Jessica says. "He likes a simple, clean, uncluttered design."

**2 Lessons learnt** "The renovations were a learning curve for me," Jessica says. "If I was to do it again, I would sand the floorboards first and stain them just before moving in, or completely cover the floorboards in cardboard so they wouldn't get scratched or covered with paint spots when painting the walls!"

**3 Design motto** "We love well-designed, aesthetically timeless clothes with a bit of an edge, so I guess that's our decorating style, too," Jessica says. "Quality not quantity would be our motto."



### SEE JESSICA'S KITCHEN COME TO LIFE!

Download the free **viewa** app, select the **real living** channel and hold your phone or tablet over the page to watch a video of homeowner Jessica revealing what she loves about her kitchen.

THIS VICTORIAN TERRACE in Sydney's Eastern Suburbs ticked almost all the boxes for Jessica and Trent Iliffe and their growing family. It has four bedrooms over three storeys, with three bathrooms, a powder room and it's pram and child-friendly. But there was just one thing the couple didn't like: the French-country style interior. "It was beige on beige, which really isn't us", says Jessica, who runs a made-to-order furniture business, Modern Furniture Solutions. "We wanted a 'wow' factor," she adds. To achieve this the couple chose the decorating palette Trent had always wanted to create in his home: black and white.

Jessica and Trent bought the house in May 2010 and took about eight weeks to make changes, which were mostly cosmetic. At the start of the process, they consulted interior designer Greg Natale, who came up with clever design solutions for some of the problem areas. One of the key areas to change was the kitchen. Initially Jessica and Trent wanted to replace the travertine floor tiles, but this was going to prove too costly because of its integrated underfloor heating. So Greg suggested the couple create a dramatic black kitchen – in keeping with their monochromatic colour scheme – to draw the eye away from the floor. The shape of the kitchen was changed, too. The existing U-shaped benchtop cut the room in half, so the couple removed the bench, changing the configuration to a galley style.

Other changes in the terrace included replacing carpet, painting the walls white, and adding decorative moulding to the walls. "We wanted more character to come →

\* bright  
colour  
hits  
lift the  
scheme

#### Moody elegance

The geometric pattern in the rug and dark and dramatic chandelier add to the Art Deco/Hollywood Regency vibe in the home. The soft curves of the Swan chairs, from Corporate Culture, are set off by sheer black curtains from Radford. The artwork (at right) is by Australian artist Jason Benjamin.



**Rock star**

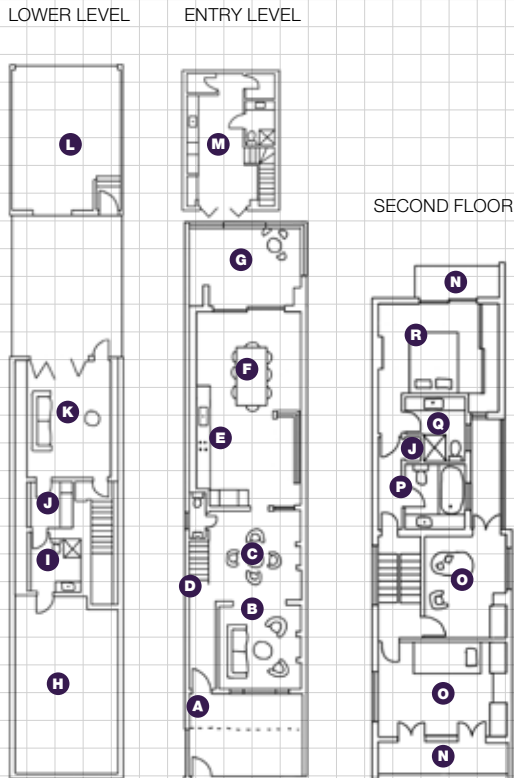
Paris, who wants to be a musician when she grows up, practises the guitar in her bedroom as sister Chloe plays along. The bed is from Snooze and the pretty Dwell Studio bedlinen came from Kido Store.



**Surprise!**  
The black and white scheme even carries through to the smallest room in the house. “We wanted something different to the norm,” Jessica says.



**Baby blue**  
Joshua's birch cot was painted white and plain curtains from Hoad were edged in black taffeta to tie in with the colour scheme throughout the house. Artworks are by Zoe Sernack. →



**KEY**  
**A** Entrance **B** Living **C** Sitting room **D** Staircase **E** Kitchen  
**F** Dining **G** Terrace **H** Underhouse access **I** Bathroom **J** Laundry  
**K** Family / Guestroom **L** Garage **M** Studio / Bedroom **N** Balcony  
**O** Bedroom **P** Bathroom **Q** Ensuite **R** Master bedroom

through the walls, that's why we love the wall mouldings," Jessica says. "So many terraces have been renovated to death with the charm and history taken out. We wanted a bit more layering and loved the old-world feel to give the house more character."

While the couple spent more than they expected on the renovation, they saved money by not using a builder. Jessica was the project manager, employing tradies and a handyman for tasks such as attaching the moulding to walls. Other cost-saving measures included Jessica having items such as chandeliers made through her business contacts overseas. The couple also saved money by restraining floorboards downstairs, instead of installing new flooring, and reupholstering a lot of the furniture to fit in with the black and white scheme. Online auction site eBay also proved a great resource for furniture and fireplaces.

The couple plan to make a few more changes, like adding a pool in the back garden, but they are happy with their new home. "We love it here," Jessica says. "Every time we walk through the front door it has that 'wow' factor for us!" 📌



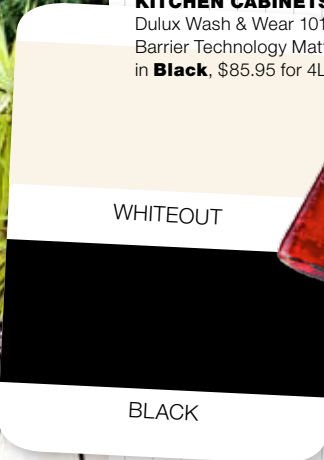




**PAINTS**

**INTERIOR** Taubmans Endure Interior low sheen in **Whiteout**, \$61.90 for 4L.

**KITCHEN CABINETS** Dulux Wash & Wear 101 Barrier Technology Matt in **Black**, \$85.95 for 4L.



**Bottled light**

Ingo Maurer "Campari" **suspension light**, \$475, Space Furniture.



**Wired up**

Replica Warren Platner **chair** in **Black**, \$745, Matt Blatt.

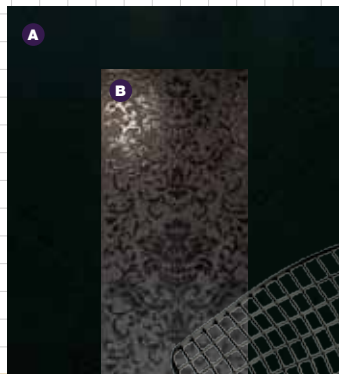
**Time for tea**  
Jessica and Chloe take time out for tea and cake on the sunny terrace.

**Simply divine**

Devine **mirror** in **Black**, \$90 for large, Fantastic Furniture. 1.05m x 75cm.



**JESSICA'S MOODBOARD** Black and white colour palette for instant luxe



**Hot hue**

Beetle **bowl** in **Berry**, \$280 for large, Dinosaur Designs.



**Face to face**

Fornasetti "Hands/Light Bulb" reversible **cushion** (both sides shown; 40cm), \$250, Macleay On Manning.



**FINISHES**

**BENCHTOP** Polished granite in **Indian Black (A)**; 40cm thick), \$80 a sq m (installation not included), WK Quantum Quartz.

**SPLASHBACK** Imperiale tiles in **Nero (B)**, \$165 a sq m, Urban Edge Ceramics. **FLOORING** Honed filled travertine tiles in **Ivory (C)**; 61cm x 61cm), \$99.95 a sq m, Amber Tiles. For stockists, see page 210.

**Diamond design**

Replica Harry Bertoina "Diamond" **side chair**, \$299, Life Interiors.



**Luxe for less**

Bravo king **bed** in **Brown**, \$399, Fantastic Furniture. *Mattress & accessories not included.*



photography mike newling (lifestyle shot) | still-life styling tahnée carroll