

home DESIGN

FOR THE WAY YOU LIVE
**the design
issue**

GREG NATALE
10 THINGS I LOVE

SIGNATURE PIECES
THE BEST OF THE BEST FROM
MAISON & OBJET, PARIS SHOW

port douglas
tropical abode

25
**DIVINE HOME
WORKSPACES**

**JEAN PAUL
GAULTIER'S**
FURNISHINGS
& FABRICS
COLLECTION



dream apartments

SYDNEY | LONDON | BRISBANE

Universal Magazines Vol. 16 No. 2 AUS \$14.95* NZ \$16.90 (Both incl. GST)

ISSN 1327 - 3930 59

9 771327 393007

lap of luxury

Minimalist modernism fuses with decadence in this mid-century, Hollywood Hills-inspired home

copy that

In the more formal of the two living spaces, two Jonathan Adler Trousdale lamps with white shades sit either side of custom-sized white sofas. A custom rug from Designer Rugs sits underneath the coffee tables, connecting the sofas to the pair of Casadei Navona lounge chairs



The two living areas that sit either side share many common features, but one side is slightly more formal than the other

Words Alexandra Longstaff

Photography Anson Smart

An intriguing depth exists to this home. From the profoundly blue hues to the decadent gold finishes, every aspect of this interior sucks you into its opulent and irresistible charm. This is something we've come to expect from Greg Natale Design, whose interior style often oozes both a romantic and a masculine touch.

This particular project is very interesting in that it was constructed by the Sunland Group as part of the Royal Pines Resort project. Not your average estate of clumped-together houses, Royal Pines is a luxurious getaway that boasts rolling golf courses and only a 15-minute drive to the holiday destination of Surfers Paradise. The homes here are all entirely residential and offer a plush lifestyle that most of us can only dream of.

These properties are a privileged bunch. Their architecture is inspired by case study homes from the '50s and '60s and, although

their exteriors are generally unassuming, the interiors are eloquent in their stories. The '50s and '60s element of the home is what inspired Greg's plan for the interior, and having worked before with Sunland Group's CEO, Sahba Abedian, Greg had a fairly comprehensive understanding of Sahba's likes and dislikes. Minimalism is key, as is a layer of opulence — similar to that found in grand Hollywood Hills homes.

In this particular four-bedroom, two-bathroom home, gold, white and navy blue are the colours of choice, and while the gold and navy add that special depth mentioned earlier, the shades of white inject a touch of contemporary minimalism, which works to balance the colour scheme.

On the ground floor, a kitchen space sits nestled between two very similarly furnished living areas. The kitchen is a clean, glitzy space filled with all the mod-cons necessary for comfortable living. It is also beautifully simple, with smooth surfaces and hidden appliances, which are integral to the design. In front of the kitchen's island →



genius trick

Soft furnishings such as cushions can make a huge difference to the overall feel of a room. Smarten a space with a formal fabric or create a relaxed environment with something more casual



bar is a six-piece white dining suite with white chairs upholstered in patterned navy fabric. Gold has been splashed dramatically on the back wall, with a Ventana mirror and a golden Meurice chandelier hanging perfectly in line above the table.

The two living areas that sit either side share many common features, but one

side is slightly more formal than the other. This slight variation between the two rooms illustrates perfectly how fine detailing makes such a difference to the overall impact of a room. In both living rooms, two Jonathan Adler Trousdale lamps with white shades sit either side of custom-sized white sofas. Custom rugs from Designer Rugs sit →



A James Salmond Furniture New Yorker buffet sits in the entryway, garnished with Jonathan Adler Gold Bird bowls and a Jonathan Adler Meurice square table lamp. A Jonathan Adler sculpture also graces the wall



THIS PAGE A Zanotta bed and Missoni furnishings are paired together beautifully, merging minimalism and pattern
OPPOSITE A Comax Australia custom Victoria armchair in Zepel ivory silk fabric is paired with the Autoban Pumpkin side table in gold from Spence and Lyda



underneath the coffee tables and connect the sofas to a pair of Casadei Navona lounge chairs that sit opposite. The space would be incomplete without the signature golden splash, which comes in the form of the Ulu Concave and Ulu Convex tables. The two Ulu Concave tables accompany the setting to the right of the kitchen — the more formal space — whereas the two Ulu Convex tables accompany the left-hand side, which is the informal area. Both table styles can also be used as stools.

The dark navy panelling on the back wall features in both the formal and informal areas and, for Greg, this panelling is one of his favourite features in the home. He explains that “the panelling breaks up the wall and even becomes an art piece”. The white borders of the panels provide structure and texture and they draw the eye to the wall in a manner that wouldn’t usually occur. Adding to — and accentuating — the artistic nature of the panelling is the Jere Raindrops mirror in gold and brass, also from Jonathan Adler. It adds an abstract element to the otherwise linear space. →

HOLLYWOOD-INSPIRED



These properties are a privileged bunch. Their architecture is inspired by case study homes from the '50s and '60s and although their exteriors are generally unassuming, the interiors are eloquent in their stories

The fine detailing is illustrated through the simple act of changing the fabric on the cushions, the style of coffee table and the style of the side chairs that sit alongside the space. These small adjustments enable the left-hand side to feel considerably more relaxed than the right-hand side, and the adjustments work to create different environments within a connected sphere in the home.

The living spaces aren't the only areas where artistic flair is evident. Jonathan Adler is well-known for their imaginative and decorative pieces, and another example of this can be found in the entryway to the living and kitchen area. Here a gold sculpture splashes across the wall above a New Yorker black-gloss and smoke-bevelled mirror buffet from James Salmond Furniture. Small golden accessories and a table lamp add the finishing touches and also inject a layer of decadence into the space.

The master bedroom with ensuite can be found on the ground floor at the rear of the home. A Rea bed in navy from Space Furniture introduces a deep hue to the otherwise minimalist white design, and two end stools from Comax Australia — which also feature in the formal living area — occupy the space at the foot of the bed.

This bedroom has the luxury of being fairly cut off from the living spaces and the first floor, giving it an unparalleled level of privacy.

If you happen to venture up the discreet architecturally-designed stairs, you will reach the first floor. A perfect space for kids or guests, the floor has three more bedrooms — one with ensuite — as well as a TV area, and offers privacy from the rooms downstairs. The colour scheme, and '50s and '60s styles feature upstairs just as much as downstairs, continuing the themes throughout the residence.

All in all, the property is fairly extraordinary. With its grand layout and spectacular location, it is surely privileged. But what is most interesting is the manner in which Greg Natale — in conjunction with Sunland Group — chose to approach the architecture and space. Combining minimalist modernity with mid-century style, as well as decadence is a fairly daring concept. And it is this fusion that traverses time and design, pushing the boundaries of interior design and creating a truly unique home. **HD**

more info?
gregnatale.com



in short

❖ This home was constructed by the Sunland Group as part of the Royal Pines Resort project ❖ Greg Natale Design carried out the interior design with a '50s- and '60s-inspired style ❖ The two living areas that sit either side share many common features, but one side is slightly more formal than the other ❖ The fine detailing is shown through the simple act of changing the fabric on the cushions, and the style of coffee table and side chairs that sit alongside the space ❖ The interior combines minimalist modernity with mid-century design, as well as extraordinary decadence

A Lola armchair and Lola sofa, both upholstered in white leather, plus a Cappellini New Antiques coffee table from Living Edge, create a relaxing seating area within the master bedroom



10 Things I Love

Interior designer Greg Natale is renowned for his award-winning projects. Greg's bold signature style in residential, commercial and retail is recognisable among Australia's top designers. Here, Greg shares with us some of his favourite things



2



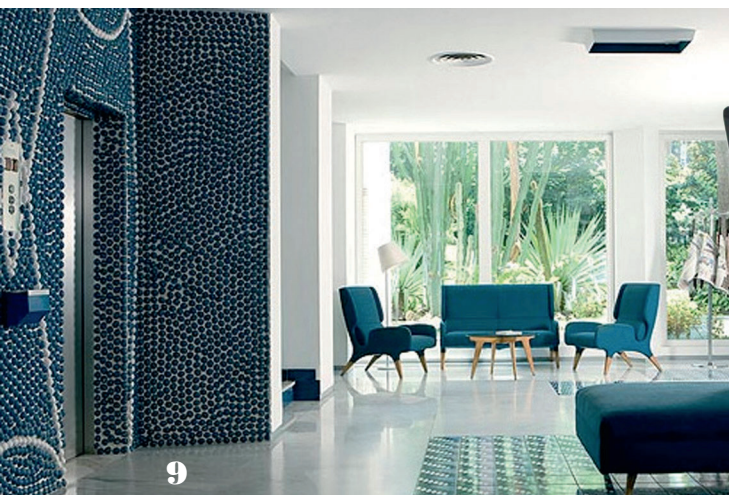
3



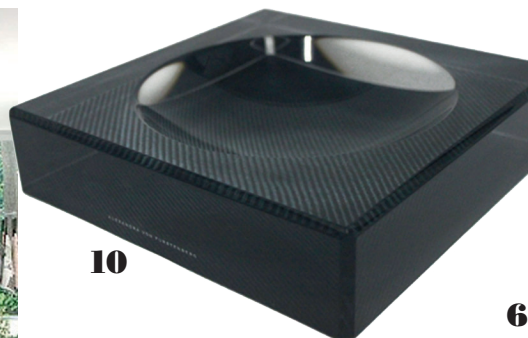
4



5

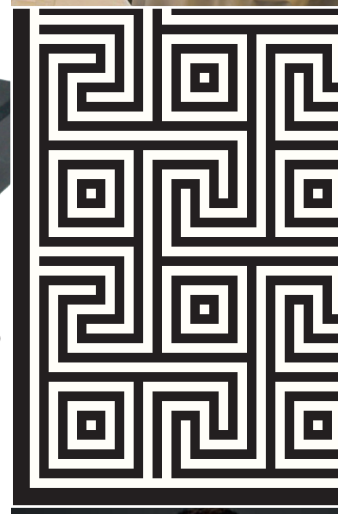


9



10

6



8

1 Chanel J12 watch with diamonds. I love the black-gloss ceramic finish and I like a bit of sparkle. **2 YSL Rive Gauche for Men.** The smell is classic and the bottle is so chic. **3 Bitossi ceramic bowl by Ettore Sottsass.** The teal blue and shape of the bowl appeal to me. **4 My diagonal wallpaper for Porter's Paints in Charcoal.** I like the angle of the stripe. **5 Cecconi's in West Hollywood.** It serves great food and is a beautiful restaurant, with an amazing diagonal marble floor. **6 My Corfu Rug** in black and white designed for Designer Rugs. **7 Black Tom Ford suit.** I love the exaggerated details, such as the wide lapels, the extra pocket detail and the shorter cuffs. It's an amazing fit and amazing quality. It's so classic and will last for a long time. **8 Olivia chair by Kelly Wearstler in fuchsia lambskin.** A modern-designed chair that has a vintage look and feel. **9 Hotel Parco dei Principi, Sorrento, Italy, by Gio Ponti.** I love the freshness of the blue and white. It's 50 years old and still looks current. **10 Acrylic carbon fibre charm bowl by Alexandra von Fürstenberg.** Because it reminds me of Halston glamour.



7