

**HOUSES<sup>®</sup> STYLE**

# kitchens + bathrooms

ISSUE 02 \$9.95

ESSENTIAL READING FOR EVERY  
DESIGN-AWARE HOMEMAKER

## 100s

**OF GREAT IDEAS FOR YOUR HOME**

148 PAGES OF COOL KITCHENS  
AND BRILLIANT BATHROOMS

**PLANS INCLUDED**

**SHOWCASE**

BRAND NEW TAPS, APPLIANCES,  
FITTINGS AND SURFACES



**AUSTRALIA'S LEADING ARCHITECTS + DESIGNERS**



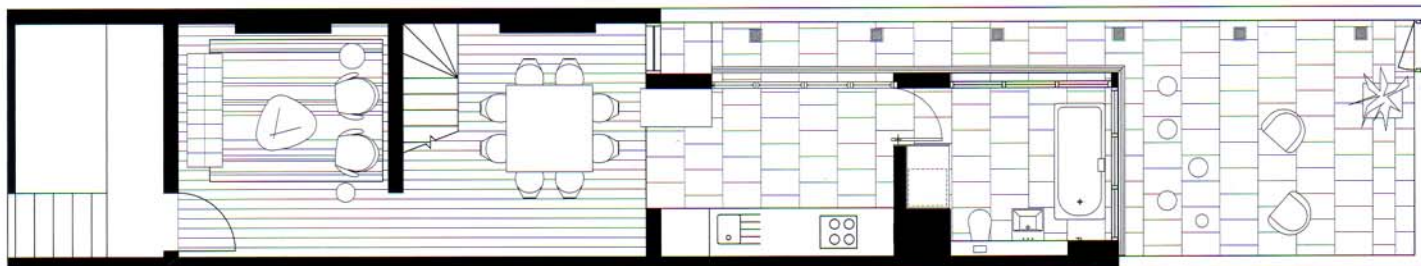
# JEWELLERY BOX

Greg Natale's bold renovation of this small inner-Sydney residence has created a gleaming bathroom and sleek kitchen that resonate with uncommon glamour.





**PREVIOUS PAGES, LEFT:** Uninterrupted views of the rear courtyard and a sunken bathtub make the bathroom feel much larger than it is.  
**RIGHT:** Travertine flooring flows from the bathroom into the courtyard, creating a near-seamless connection between the spaces.  
**OPPOSITE PAGE:** Mirrored joinery increases the feeling of space in the kitchen.



Floor plan

**THIS HOUSE IN DARLINGTON**, Sydney, is imbued with a glossy opulence. Courtesy of Greg Natale Interior Design, the highly polished surfaces, gleaming mirrors and moody lighting hark back to a bygone era but still communicate an unmistakably *au courant* edge.

Rather than disrupt the existing hierarchy of rooms in this inner-city terrace, Greg chose to maintain the floor plan but give the house greater transparency and connection to the outdoor courtyard. To achieve this, he converted the bathroom (at the rear) into a crystalline box with two walls consisting entirely of glass louvres. Thus, when the full-height pivot door to the bathroom is open, the site line from the front door of the house to the courtyard is largely unobstructed.

The bathroom itself has a quiet lavishness that is emphasized by the purity of its surfaces. The bathtub has been sunk seamlessly into the floor. The vanity and sanitaryware are both wall-mounted, floating above the travertine floor. When combined with jewel-like pendant lighting, a large mirror and a pelmet-lit shelf recessed into the travertine wall, this room can be either a personal retreat or a show-stopping architectural feature.

"Glamorous" is also a byword for the kitchen. Despite the narrow confines, the high-shine mirror finish on the joinery and a large sliding glass door to the courtyard melt away any sense of thrifty containment. Again, the surfaces are clean and the lines are pure. With a panelled island bench, adjoining gloss-black dining table and striking light fitting, the room almost has an Art Deco atmosphere. The floor is also travertine in the kitchen and it flows into the bathroom and out to the courtyard, illuminated by a string of downlights that guides the eye outside.

The conventional wisdom when renovating a terrace house such as this one is to hide the bathroom somewhere inside and to open the rear up as a living area. Greg Natale has flouted that formula and the result is a beautifully resolved narrative of spaces that extends from the front door to the rear courtyard. The kitchen and bathroom are integral to the success of this plan, and the energy invested in making these two rooms work is palpable. Sometimes, contemporary design is meek and stripped of its expression. Here, the contemporary is celebrated with a flourish. **K+B**

**DESIGNER**

Greg Natale Interior Design  
 Studio 6, Level 3  
 35 Buckingham Street  
 Surry Hills NSW 2010  
 Tel: (02) 8399 2103  
 Fax: (02) 8399 3104  
 Email: info@gregnatale.com  
 Web: www.gregnatale.com

**PRACTICE PROFILE**

Contemporary design for the residential, retail and corporate sectors.

**PROJECT TEAM**

Greg Natale, Stacey Papas

**BUILDER**

Ciolino Constructions

**JOINER**

Tusa Brothers

**CONSULTANTS**

Lighting JSB Lighting

**TIME SCHEDULE**

Design, documentation  
 12 months  
 Construction 6 months

**Total renovation**

\$300,000

**Kitchen**

\$30,000

**Bathroom**

\$30,000

**PHOTOGRAPHY**

Sharrin Rees



**LEFT:** With the bathroom door open, the louvres on the rear wall are visible from the front door of the house. The effect is to increase the perceived size of the small inner-city dwelling.

#### PRODUCTS KITCHEN

##### Internal walls and ceiling

Plasterboard painted with Dulux

'Buff It' **Flooring** Striato Travertine

from Onsite Supply and Design

**Joinery** White Corian benchtops;

6 mm Silver mirror cupboards;

Laminex 'Moleskin' splashback;

island bench fronts in 2-pac

white **Lighting** Modular

downlights from JSB Lighting;

fluorescent pelmet lighting under

overhead cupboards **Sinks and**

**tapware** Franke sink from

Winning Appliances; tapware

from Rogerseller **Appliances**

Miele oven and stovetop; Fisher

& Paykel integrated refrigerator

and integrated dishwasher; Smeg

rangehood **Doors and windows**

Silver anodized bi-fold doors from

Endeavour Aluminium Products

**Furniture** Solid timber dining

table by Greg Natale; white

Eames chairs from Work Arena

#### PRODUCTS BATHROOM

**Internal walls** Glass, mirror and

travertine cut in 'crazy paving'

pattern **Flooring** Travertine

**Joinery** White Corian benchtop;

6 mm silver mirror cupboards

**Lighting** Modular downlights from

JSB Lighting; fluorescent pelmet

lighting under overhead

cupboards **Tapware and fittings**

Tonic Motion sink mixer from

Rogerseller **Sanitaryware** Bette

Solo steel bath, Zero washbasin

and Villeroy & Boch Omnia

Compact toilet suite, all from

Rogerseller **Doors and windows**

Glass louvres with silver anodized

frame **Other** Custom-made

overhead cupboards faced with

6 mm silver mirror