



Roll back the years

Using iconic Broadhurst wallpapers to transform two Sydney homes, interior designer Greg Natale is a paste master

If co-ordinated colours make you think of Margaret Thatcher handbag/shoe pairings or matchy-matchy 1970s three-piece suites, think again. Designers, present and past, are showing the world how to put pattern and print together with panache.

When Sydney-based interior designer Greg Natale was called on to transform Hardwick Turnbull House, a 1940s bungalow on the city's east side, into a family home for English clients, he was asked to break ranks with the regulation Sydney glass-box look and create an opulent interior with lots of wallpaper that was neither traditional nor formal. Out went travertine floors, floor-to-ceiling glass windows and Le Corbusier loungers and in came rich colours, contemporary

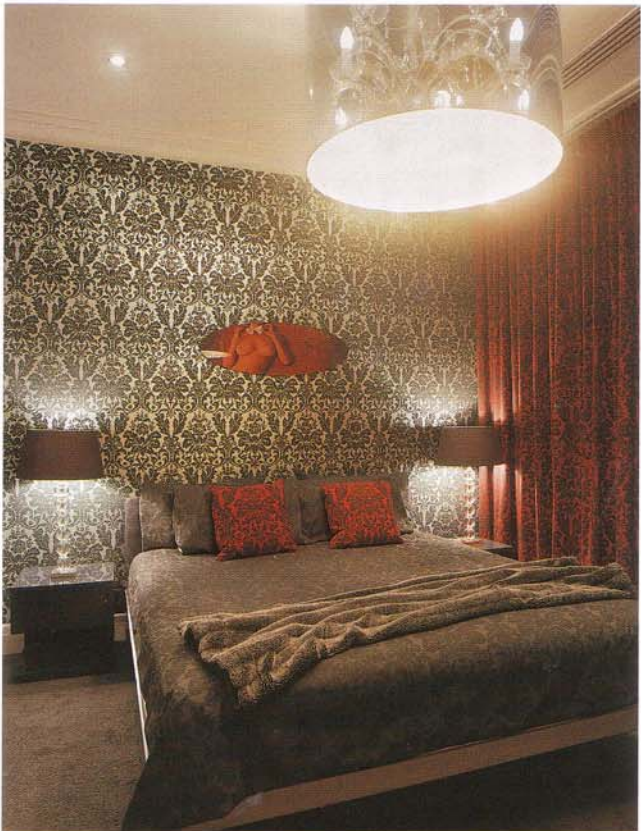
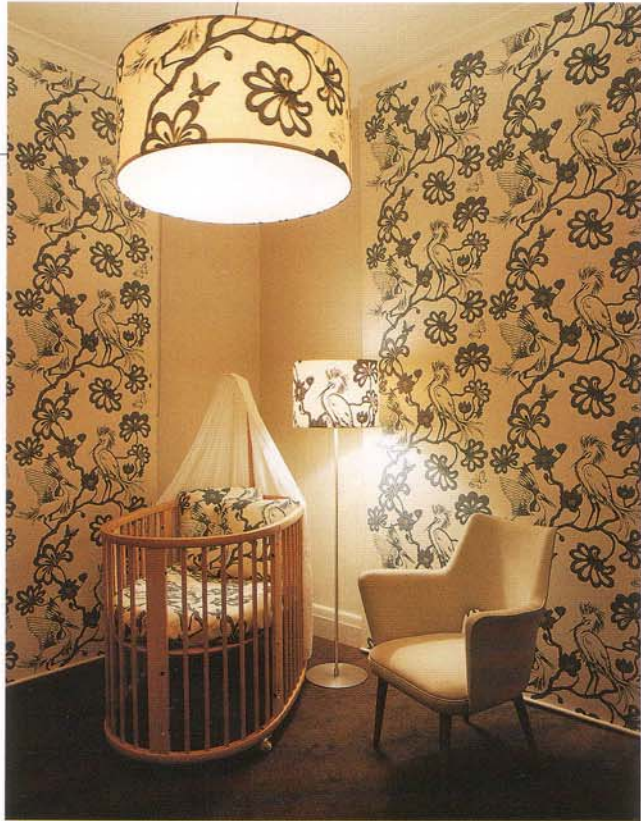
design classics and wallpapers and fabrics courtesy of the late Australian designer Florence Broadhurst.

Natale's first port of call was Sydney boutique Signature Prints, which reproduces all of Broadhurst's wallpaper from the 1960s and 1970s. Given that she created, on average, two wallpapers a week from the late 1950s through to her still-unsolved murder in 1977, this is no capsule collection. Some 500 of her designs are there, from chaotic psychedelic swirls, peacocks, blossoms, fans and butterflies to sharp geometrical designs, and all of them can be colour customised and individually screen-printed on a variety of media.

Natale customised lighting, walls and bedlinen with Broadhurst's prints in what he calls the best example »

WALL STORY

Above, the screening room at Hardwick Turnbull House. The wallpaper, blinds, cushions and lights feature Florence Broadhurst's 'Bamboo' print. The cowhide chairs, table, side tables and walnut stools are by Charles and Ray Eames. The blinds cover sliding glass doors that lead to a pool



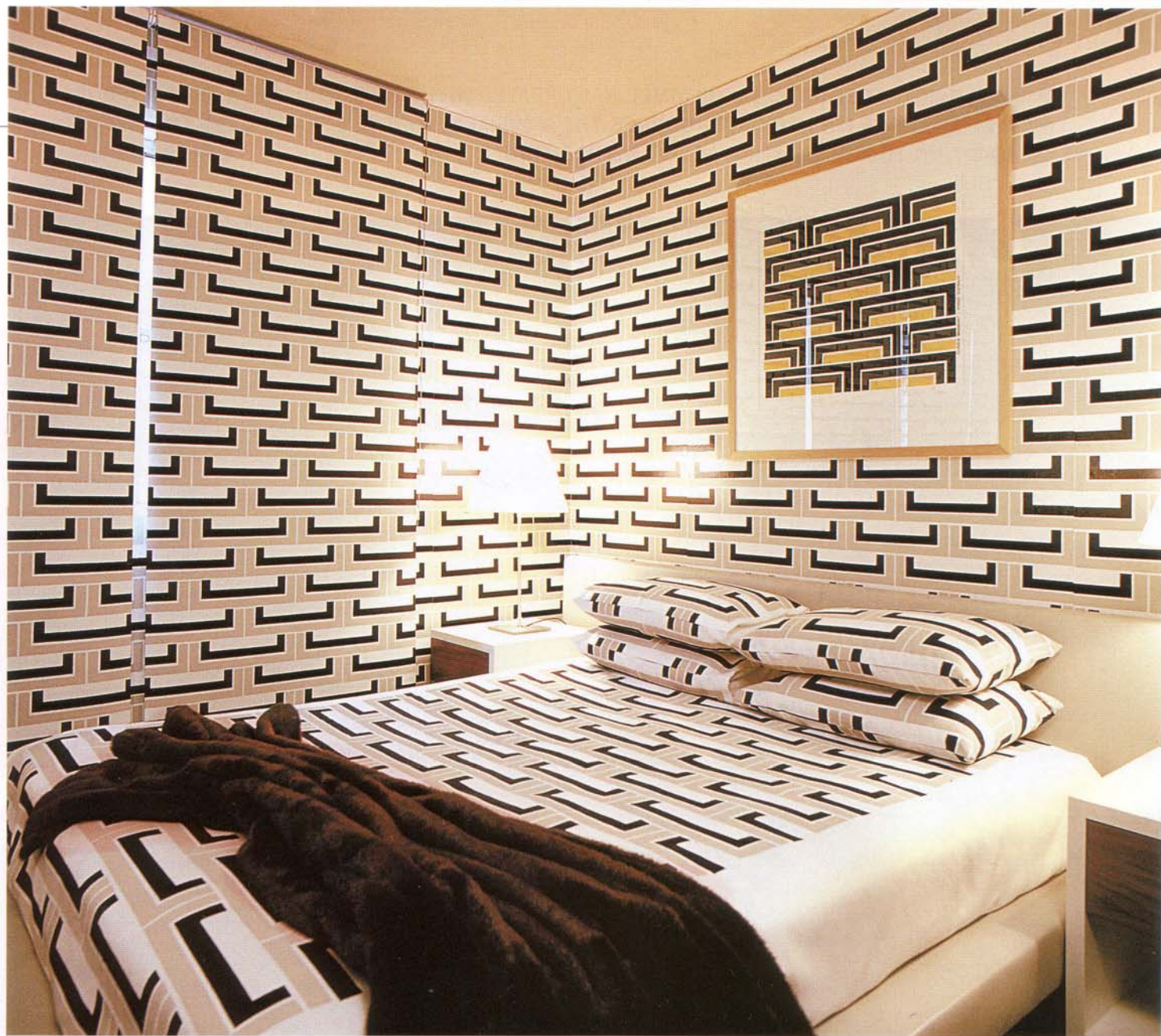
MATCH POINTS

Top left, the nursery at Hardwick Turnbull House, with Broadhurst's 'Egrets' print

Top right, a child's room with 'Peacock' print and a Verner Panton chair

Bottom left, the master bedroom uses 'Florentine' print. The main light is by Marcel Wanders

Bottom right, a child's room with 'Abstract' wallpaper, customised linen and a chair by Driade



PHOTOGRAPHER: MATT LEE

yet of his 'maximalist' style. For this project and for the Gonano apartment (above) in Sydney's Summerhill, Natale, who is scooping interior design awards all over Australia, was inspired by the 'over the top and kitsch' traditional co-ordinates at Buckingham Palace, Jackie O's touches in The White House, Colefax & Fowler designs and the late Australian designer David Hicks.

The Broadhurst revival of the past five years has seen interiors everywhere decorated with her prints – the designer's motifs even adorned the Australian pavilion at this year's World Expo in Aichi, Japan (see page 169 for Expo report). And so popular has her work become, design aficionados visiting Sydney can tour the latest 'Broadhurst sites', the best of which is the Butterfly Room of the State Theatre, where Broadhurst's original hand-crafted butterflies still adorn the walls. ★
Greg Natale Interior Design, Studio 6, Level 3, 35 Buckingham Street, Surry Hills, Sydney, tel 61.2 8399 2103, www.gregnataleid.com.au.
Signature Prints, www.signatureprints.com.au

BUY DESIGN DOWNUNDER

Natale's pick of Sydney's top design stores...

Living Edge (328 High Street, Chatswood, tel: 61.2 9415 0500) for Knoll and Eames pieces.

De de ce (263 Liverpool Street, Darlinghurst, tel: 61.2 9360 2722) has a great selection of contemporary European pieces from the likes of Minotti, Moooi, Cappellini and Knoll.

Its rival store **Space Furniture** (84 O'Riordan Street, Alexandria, tel: 61.2 8339 7588) stocks European brands from Driade, Kartell and Edra to Ingo Maurer.

For ceramics with a 'resin look', head to **Dinosaur Designs** (585 Elizabeth Street, Strawberry Hills, tel: 61.2 9698 3500).

For amazing vintage pieces, try **Twentieth Century Modern Furniture** (3/138 Darlinghurst Road, Darlinghurst, tel: 61.2 9331 2033).

SWEET THEMES

Above, the one-bedroom Gonano apartment uses Broadhurst's 'Steps' print on the wallpaper and bedding. Framed on the wall is an original Broadhurst print that Natale customised and turned upside down. The bed is by Cappellini, the lights are Luceplan