

WHO DARES WINS

DESIGNER GREG NATALE HAS NO INHIBITIONS WHEN IT COMES TO COLOUR AND PATTERN, CREATING A BOLD HOME THAT'S A FAR CRY FROM ITS BLAND PREDECESSOR

WORDS **CARRIE KABLEAN** PHOTOGRAPHS **CHRIS CHEN** STYLING **LYNSEY FRYERS**

KITCHEN: Walls painted with Wash & Wear 101 **Advanced Low Sheen** in Candle Bark, \$62.38 per 4L, from Dulux. Simona honed **travertine**, \$120 per sqm, from Onsite Supply + Design, (02) 9360 3666. Eames **dining table** with white laminate top, \$1732.50; Eames DSR **chairs** with Eiffel Tower base, \$330 each, from Living Edge, (02) 8596 8888. **Pendant lights**, \$500 each, from Funk Me (no longer in business). Kitchen **joinery/island**, \$10,000; teak veneer **sliding doors**, \$1650, both from Tusa Brothers, (02) 9534 2142. Vola KV1 **tap**, \$885, from De De Ce.



→ **BRIEF** When Gary Hardwick and Tana Turnbull moved into their new home in Sydney's eastern suburbs it was, says Tana, "a characterless brown and cream shell". Impressed with the edgy colour schemes of interior designer Greg Natale, the couple asked him to redecorate every room, with a new kitchen as a priority.

→ **BACKGROUND** The home, a '30s three-bedroom California bungalow, had been extended over the years and, says Greg, had lost its natural flow. There was a tiny kitchen and a poorly located formal dining room. Greg had to persuade Gary and Tana to relocate the kitchen, rather than just enlarge it.

→ **NEEDS** With four kids, Tana and Gary wanted a "very welcoming family home, but also one that we would like as adults". The couple also wanted the bedrooms to reflect the personalities of the children – Biba, 10, Lili, six, Ben, four, and baby Hugo – and give each child a personal space they could really enjoy.

FORMAL DINING (left) Walls painted with Wash & Wear 101 **Advanced Low Sheen** in Cucumber Crush, \$62.38 per 4L, from Dulux 13 25 25. Prince Street 'Wooster' **carpet** in Hibiscus, POA, from Whitecliffe Imports, (02) 9692 8822. Mirror ball **pendant lights**, \$1270 each, from De De Ce, (02) 9360 2722. Twin **artworks** commissioned from Scott Petrie, \$3500 each. Teak-stained Louis XVI **side chairs**, \$394 each, from Casa Mia, (02) 9773 1144. Chairs upholstered with Florence Broadhurst 'Hollow Squares' **fabric**, POA, from Signature Prints, (02) 8338 8400.

1 PLEASE THE EYE WITH LAYERS OF TEXTURE AND SHAPE

Replacing a small doorway with two generous sliding doors into the formal dining area opens up the space and provides rich contrasts as modern and retro styles combine. The linear, quarter-teak veneer used on the sliding doors is echoed in the kitchen island, with its crisp, white stone surface, and the teak finish on the chairs in the dining area.

Greg's subtle layering techniques can also be seen in the pendant lighting which is a feature throughout the home. Tana Turnbull describes the lighting in the house as "just incredible, fantastic".

2 MIX OLD AND NEW FOR HIGH-CLASS RETRO STYLE

Clean lines, integrated appliances and high-gloss cabinetry are offset by the orange-red

pendant lighting and Eames DSR chairs in the kitchen. "There's a very strong retro theme to this house," says Greg Natale, "but it's also about mixing traditional and modern."

The chequerboard-pattern travertine floor adds an interesting texture and is "unashamedly retro", as is the horizontal teak veneer finish on the kitchen island and the double doors to the dining room.

Greg removed the cornices to achieve a streamlined look in the kitchen, which faces north and receives plenty of natural light.

3 STRICT SYMMETRY WORKS WELL IN A FORMAL SETTING

Greg concentrated on balance and symmetry in the formal dining area. The proportions of the doors, the specially commissioned Scott Petrie twin artworks on either side, the chair backs and even the pattern in the Florence Broadhurst 'Hollow Squares' print have →



Greg Natale and Tana Turnbull



DESIGNER'S TIP →

"THROW ALL THE RULES OUT THE WINDOW. JUST BREAK OUT AND DO WHAT YOU WANT. DON'T BE AFRAID OF TAKING A CHANCE"

BIBA'S ROOM (right) Florence Broadhurst 'Peacock Feathers' wallpaper, \$380 per roll, from Signature Prints. Kartell 'Componibili' storage unit in Silver, \$320; red Pantone chair, \$310, both from Space, (02) 8339 7588. Red laminate wardrobe/desk, \$4246, from Tusa Brothers. Ultra Plush carpet in Firetruck Red, \$60 per sqm, from Alex Bowen Carpets, (02) 8338 0880. **MAIN BEDROOM (opposite)** Wall-coverings, bed linen and curtains in Florence Broadhurst 'Florentine Tapestry', POA, from Signature Prints. Bedside table by Greg Natale, \$800, from Tusa Brothers. Bobble bedside lamp, \$1150, from Bloomingdales Lighting, (02) 8345 6888. Moooi ceiling light shade by Marcel Wanders, \$2144, from De De Ce. **SITTING AREA (below)** Walls painted with Wash & Wear 101 Advanced Low Sheen in Cucumber Crush by Dulux. Random ceiling light, from \$816, from De De Ce. Sofa (not new) from Poliform, (02) 9690 0777. Bobble standard lamp, \$1250, from Bloomingdales Lighting. Teak-stained Louis XVI Carver chairs, \$520, from Casa Mia. Fabric for chair upholstery, cushions and curtains is Florence Broadhurst 'Hollow Squares', POA, from Signature Prints. Calacatta marble-top table, \$2262, from Corporate Culture, 1300 768 626. Vintage '70s sculpture from eBay.



been painstakingly matched. According to Greg, the twin hanging mirror balls "add sparkle and glamour", and the rich texture and dramatic colour of the carpet is echoed in the blood-red artworks.

The fuchsia and green colour combination was "purely subjective. It came out of nowhere," he says, "but it works really well."

4 CREATE YOUR OWN LOOK WITH AN ECLECTIC FUSION

Retro, repro, traditional and modern fuse in the sitting area. "In the 1990s the look was traditional or modern, one or the other," says Greg. "Now it's about mixing it all up."

"Here, the Poliform sofa and the retro-looking dining table contrast beautifully with the marble on the small table, the repro Louis XVI chairs and the crystal Bobble lamps. The long curtains, the cushions and the Louis chairs are all coordinated."

Greg wanted each room to reflect its use – or user – through a different colour and pattern. "That was the concept. I wanted to create a mood for all the different Florence Broadhurst patterns – and that's how we've connected the house. It's all different colours and patterns, but it has strong cohesiveness."

5 BOLD CAN BE BEAUTIFUL WHEN IT COMES TO COLOUR

Ten-year-old Biba wanted a blue room, Greg says, and also "something really funky, fun and out there". He suggested the red and powder-blue combination, and Biba loves it.

The room has blue curtains, a blue pendant light and a white bed with blue feathers, and the red 'eyes' in the spectacular 'Peacock Feathers' Florence Broadhurst wallpaper serve to bring the colour scheme together.

The stunning red carpet and wardrobe/desk combination give the room energy →



Q&A

WITH OWNER TANA TURNBULL

WHY DID YOU CHOOSE GREG NATALE?

We wanted something different and out of the ordinary, and I knew of Greg's work. I've always liked colour but wasn't sure how best to use it. Greg's ideas made sense – I think we surprised him by going with them! We just loved his enthusiasm.

HOW LONG DID IT TAKE?

About five months. We had to move out for two months while the structural work was being done, and when we came back we had no kitchen for a month. I was pregnant and it did get a bit hair-raising. Poor Greg, he coped very well.

HOW'S THE NEW KITCHEN?

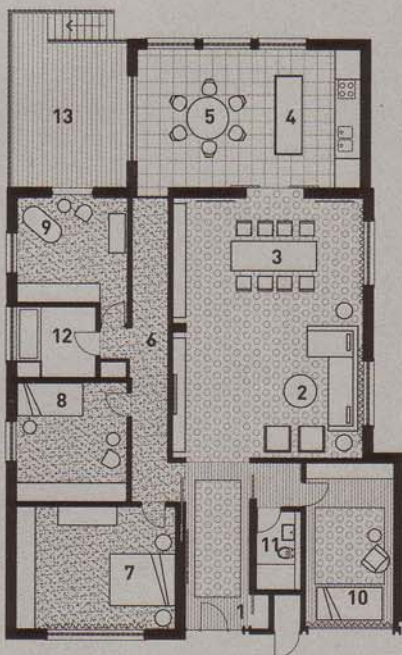
It works brilliantly. It's now at the back of the house, and the dining room is where the kitchen used to be. It's so logical. I love cooking, and now we have a big kitchen where we can all eat.

DO YOU HAVE A FAVOURITE ROOM?

Probably Biba's because it's so out there and full on – she just loves it. It's a very calming room; very rich and safe.

WHAT WOULD YOU DO DIFFERENTLY?

I wish we'd been able to have a silver travertine stone floor in the sitting/dining room – but, unfortunately, that would have broken the \$200,000 budget.



1. Entry 2. Sitting room 3. Formal dining
4. New kitchen 5. Informal dining 6. New corridor
7. Master bedroom 8. Bedroom
9. Bedroom/nursery 10. Bedroom
11. Bathroom 12. Bathroom 13. Terrace



NURSERY Wall painted with Wash & Wear 101 **Advanced Low Sheen** in Buff It, \$62.38 per 4L, from Dulux. Floor-to-ceiling **roller blind**, \$822, from Blinds by Bayliss, (02) 9360 2744. **Blind, lampshade** and **cushion** printed in Florence Broadhurst 'Egrets' fabric, POA, from Signature Prints. Vintage **chair**, \$1000, from Funk Me.

and dynamism, which is great for a pre-teen. "It couldn't have been all blue," says Greg. "It would have been too boring!"

6 THERE'S NO SUCH THING AS TOO MUCH PATTERN

Gary and Tana decided on blue for a boy, but not in the classic sense. Drawing on the French and English tradition of totally coordinated interiors – but with his own fashion-forward spin – Greg saturated baby Hugo's room with Florence Broadhurst prints and "totally camped it up with the blue Egrets fabric".

In some ways, this is the most colour-neutral room in the house, but the repeat patterning on the blinds, lights shades and cushioning adds a definite touch of intimacy and interest.

It is, says Greg, Laura Ashley and Colefax & Fowler reinvented for the 21st century.

7 PULL OUT ALL THE STOPS FOR A GLAMOROUS LOOK

Greg says the brief he was given for the master bedroom (on the previous page) was, "Something sexy and romantic. That's basically it!" The result is a sumptuously luxe look, bordering on the decadent. Tana wanted the house to be really glamorous, and here Greg achieved the effect with the charcoal-grey/silver Florentine print wallpaper, which is echoed in the custom-printed bed linen and lush satin-suede red curtains.

"Tana commissioned the sexy print for Gary's 40th birthday," says Greg, "and we toned in the reds." To top off the luxurious look, there's even a chandelier, neatly enclosed in a modern, silver minimalist cylinder. ✦
Greg Natale Interior Design, Surry Hills NSW (02) 9361 6594; www.gregnatale.com.au.