

domain

Cosy up

Stay warm, feel good

Living rooms under eco-friendly fire p6

Australian knitters wrap the world p10

home | Siobhan O'Brien

THE AIM

To turn a late-19th-century terrace into a modern space. Natural light and glass were high on the client's wish list.

HOW LONG DID IT TAKE?

Eighteen months from start to finish – including design, council approval and building.

WHAT THE OWNER WOULD DO DIFFERENTLY

Continue the renovation up to the attic.

OWNER'S FAVOURITE FEATURES

The water feature, bathroom and natural light.

DESIGNER

Greg Natale Interior Design, 8399 2103, 0411 703 967

BUILDER

Ciolino Constructions, 0414 991 603

JOINERY

Tusa Brothers, 9534 2142

CHEAT SHEET

Bathroom lights from JSB Lighting, 9571 8800.

Philippe Starck furniture from Space, 8339 7588.

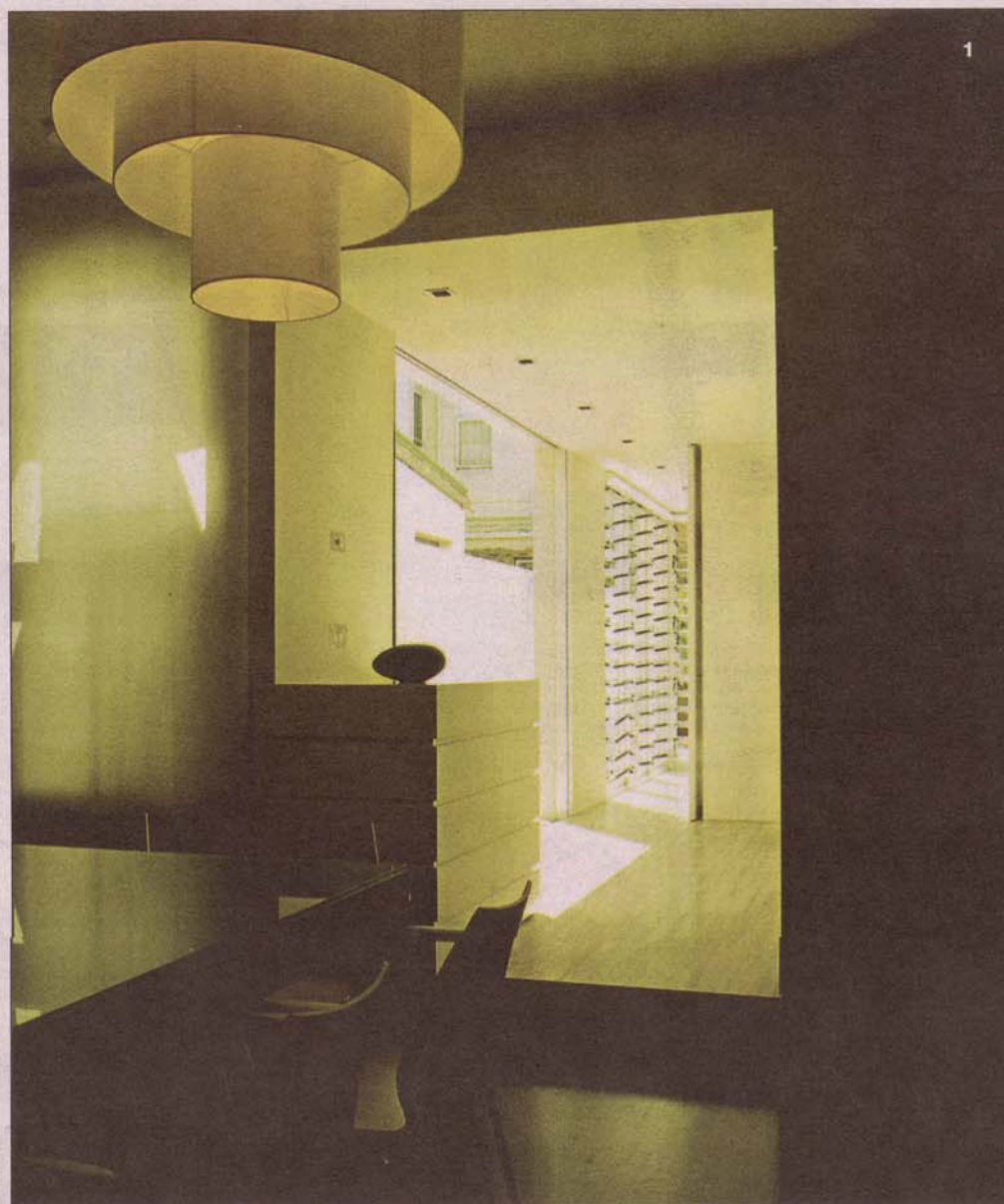
Travertine flooring from Onsite Supply and Design, 9360 3666.

Rug by Rugs by Design, 9519 8555.

Swan chairs from Corporate Culture, 9690 0077.

Noguchi coffee table and **Eames furniture** from Living Edge, 8596 8888.

Reflections 80 light from ECC Lighting and Living, 9380 7922.



Transparent motives

A terrace adorned with glass and mirrors is a refuge for kitsch and kin.

Greg Natale is a wildcard designer. He is inspired by high-style glamour and low-brow kitsch, an approach that recently put him on the shortlist for colour at the national Interior Design Awards. His work on this 19th-century, two-storey terrace house that faces the Eveleigh railway yards in Wilson Street, Darlington, is indicative of his rules. It is sleek and contemporary with theatrical sparks.

In the kitchen, mirror-covered cupboards hog the limelight, while white Corian provides a sleek finish for the benchtops and joinery. Then there's the bathroom, which has more glamour than many Sydney party venues: the walls and floor are covered in textured travertine; above the sunken porcelain bath hang Swarovski crystal pendant lights. To the north-west and to the south-west, floor-to-ceiling glass louvres provide views of the rear courtyard and maximum cross-ventilation.

When Natale first saw the unusually elongated house (it's 3.8 metres by 22.5 metres), it was dark and cramped – "not a nice space to be in", he says. So he knocked out some internal brick walls and

replaced them with glazed bifolds and see-through louvres. The result is that each room seems to flow into the next. The owner, Anthony Seamann, says: "I gave Greg a carte blanche, but I knew, I wanted a house full of glass and mirrors. I wanted it to be transparent."

The sitting room and dining room are at the front of the house, the kitchen is in the centre

When Natale first saw the house it was dark and cramped. So he knocked out some internal walls and replaced them with glazed bifolds and see-through louvres.

and the bathroom/laundry towards the rear. "The idea for the floorplan was to keep the kitchen as the hub and the main focus. We felt that if we moved the kitchen to the rear of the home, the front sections would be too isolated. However, we wanted the kitchen to have a strong connection with the courtyard and the outdoors, so we sank the bath and floated the basin and toilet, so nothing created a barrier between the indoors and outdoors," Natale says.

Materials and fittings that complement this simple design include black stained floorboards in the sitting room and dining room and silver-grey travertine flooring in the kitchen, bathroom and courtyard. The juxtaposition of the smooth, stained wood and the marbled, irregular travertine creates a textured look that packs a punch. "I love the movement and colour

variation that the travertine creates," Natale says. "It is so Hollywood."

To ensure the dramatic floors take centre stage, the walls throughout are covered with basic plasterboard painted white. The sitting room and dining room are punctuated with lively furnishings and artworks such as *Pebbles 1 and 2*, two green canvases – one in the sitting room and one in the dining room – by Scott Petrie, whose work is on permanent display in

the foyer of the mix are whisky-colour the Japanese quirky, over the American. The dining table the plastic D are clustered them is a sculpture made from

The courtyard outdoors the walls, a Mexican water feature lounge chair Philippe Starck From the balustrades bathroom, I will be part Asked to with Natale, transform the

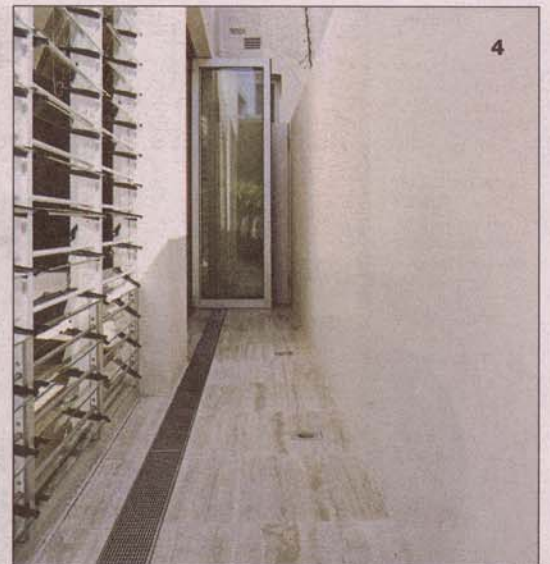
Photos: Marco Del Grande, Sharrin Rees, Jonny Valiant
Plans adapted by Robert Parkinson



2



3



4



6

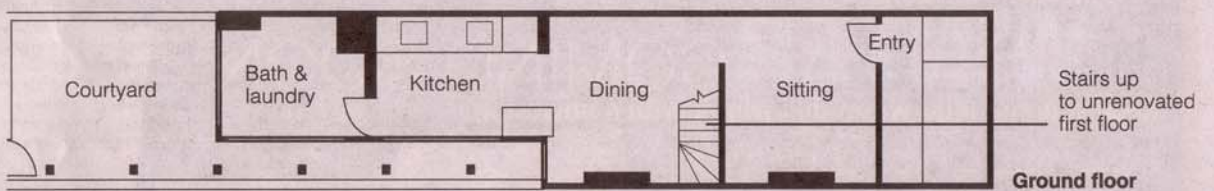


5

Renzo Piano's Aurora Place. Also in a striped rug in earthy tones, red swan chairs, a coffee table by designer Isamu Noguchi and a chess piece-cum-side table by designers Ray and Charles Eames. The room features more Eames, this time the Eiffel Tower-based chairs, which surround the dining table. Above the dining table, a sculptural pendant light, Reflections 80, in cotton and acrylic, lights the room. The courtyard paving is travertine, but the rest is simple: cement-rendered walls, a yucca plant in a copper tub, a cluster of Eames LCW plywood stools (from Living Edge) and colourful stools.

In the dining room, a stairway with glass balustrades leads to the upstairs bedrooms, a study room and study in the attic. These are the next renovation.

Seamann identifies the best thing about working with Seamann says: "His ability to transform the mundane into magic."



1 The dining room at the front of the house opens onto the kitchen, where louvres and glass doors connect the indoors with the courtyard.

2 The simple design is complemented by 20th-century modern and contemporary furniture.

3 Frameless glass balustrades disappear, accentuating the feeling of space.

4 More glamour outdoors courtesy of travertine paving, while bright walls and louvres work together to draw in light.

5 The bathroom has a sunken bath and raised basin to make a direct connection with the outdoors.

6 Mirror-faced cupboards hog the limelight in the kitchen.